

Healthy Way

RC HOSPITAL & CLINICS...60+ YEARS OF CARING FOR YOU & YOURS



**RCH&C SURGERY TEAM
IN ONE OF TWO
NEW SURGICAL SUITES**



**RCH&C NEW ONSITE
WIDE BORE MRI**



RCH&C OB TEAM

RC
HOSPITAL
& Clinics

FEBRUARY 2015 ISSUE

MOVING FORWARD p 2

KIDNEY DIALYSIS CENTER COMING TO RENVILLE COUNTY p 2

COMING SOON p 3

CAPITAL CAMPAIGN UPDATE: ONSITE MRI COMING SOON p 3

PATIENT EXPERIENCE AT RCH&C p 3

BARRETT'S ESOPHAGUS p. 4

RCH&C COMING EVENTS p 4

Moving Forward

NATHAN G. BLAD, CEO
RC Hospital & Clinics



This past year marked an historic period in the support and development of Renville County Hospital and Clinics' healthcare services. The vision from our Governance Board, support of our community, and dedication of our staff culminated into a period of future investment, quality improvement, and increased access to care unparalleled in prior years. Five key initiatives led the way in 2014, including the start of construction on the new Renville County Hospital and Clinics' medical center, the installation of the industry-leading EPIC electronic health record system, attainment of key provider recruitment goals, and increased access to quality healthcare.

Our strategic goals for this year continue to build upon our commitment to invest in quality care, personalized service, and patient education to improve the health of our communities. Of course the most significant investment resides in the construction of the new medical center, which is on schedule to open for patients September 28th, 2015. The new 63,500 square foot facility will feature onsite wide bore MRI services, new women's health services and related equipment, as well as expanded surgical and mental health service offerings.

This is consistent with our goal, to provide our patients with exceptional care and become your healthcare provider of choice. If for some reason we do not meet your expectations or if you simply have questions about our services, please contact me by email at bladn@rchospital.com or by phone at 320.523.3575.

ON THE COVER

RCH&C SURGERY TEAM IN ONE OF TWO NEW SURGICAL SUITES AT THE NEW MEDICAL CENTER
Dr. Jared Slater, General Surgeon, Michele Hagen, RN and Andrew Johnson, CRNA

NEW ON-SITE WIDE BORE MRI THAT WILL BE AT THE NEW MEDICAL CENTER

RCH&C OB TEAM
Naomi Freyholtz, RN, Dr. Joseph Montanaro, OB/GYN and Tracy Prokosch, LPN

RC HOSPITAL BOARD OF DIRECTORS
John Stahl, Chair, Dr. Paul Buhr, Bob Ehlers, Dr. Dean Lindquist, LaMont Jacobson, Bob Mehlhouse and Dolores Nelson

CHIEF OF MEDICAL STAFF - Dr. Jared Slater, General Surgeon



A publication of **RC Hospital & Clinics**
611 East Fairview, Olivia MN 56277 • 800.916.1836
www.rchospital.com • [facebook.com/rc.hospitalclinics](https://www.facebook.com/rc.hospitalclinics)



Sara Maher, Editor ASB Design Inc., Graphic Design

Kidney Dialysis Center Coming To Renville County

RC Hospital & Clinics (RCH&C) and the CentraCare Kidney Program, a division of The St. Cloud Hospital and CentraCare Health System announced that the two organizations are partnering on a new dialysis center to serve the needs of Renville County patients.

"Partnering with RC Hospital & Clinics is an important step to provide the best possible kidney care to those in need," said David Walz, CentraCare Kidney Program Director of Dialysis and Renal Services. "We look forward to working with the team of professionals at the Olivia Clinic to improve the quality of life for dialysis patients in their communities."

The dialysis center will be located at the current RCH&C – Olivia Clinic building at 600 East Park Avenue in Olivia, Minnesota. The existing Olivia Clinic building will be renovated to better serve the needs of dialysis patients. Construction is scheduled to begin next fall with an anticipated opening in early 2016. The CentraCare Dialysis Center will provide outpatient renal dialysis services featuring the most state-of-the-art technologies and personalized patient comfort to serve local patients who need dialysis treatment. Patients will receive their hemodialysis treatments in a clinical environment that is cheerful and homelike. Treatment options will include in-center hemodialysis, home hemodialysis and peritoneal dialysis.

"Access to local dialysis services allows patients with chronic and end-stage kidney disease to live longer and have an improved quality of life" said CentraCare Nephrologist Dr. Bryan Rolph. Beginning in February of this year Dr. Rolph, who is board certified in both internal medicine and nephrology, will provide local nephrology outreach services on a routine basis at RCH&C. Dr. Rolph will also oversee the clinical direction of the new dialysis center. Dialysis and nephrology patients may set up an appointment with Dr. Rolph by calling the RC Hospital & Clinics' Outreach Scheduling department at 320.523.3445.

"Kidney dialysis has long been identified as a service need for our local communities," stated Nathan G. Blad, MBA, CEO at RC Hospital & Clinics. "Over the past few years, we have looked at options for how we might make this crucial service available." According to Blad, the decision to partner with CentraCare Kidney Program was driven largely by the operational complexity, technical requirements, regulatory demands, and sheer economics of maintaining a dialysis center. "Our relationship with CentraCare allows us to further expand our services and bring needed care closer to home for Renville County residents," said Blad. "Our residents will no longer have to travel long distances for dialysis services."

CentraCare professionals will also share their expertise with the community to help increase awareness of kidney disease and modifiable factors to lower kidney disease risk. This is critical when considering that 1 in 10 adults in the U.S. currently has kidney disease, but many don't know it because the disease is often symptomless. Diabetes and hypertension are the two leading causes of kidney disease. The cornerstone of treatment for kidney failure is dialysis, a process that uses an artificial dialyzer to remove wastes and excess water from the bloodstream.

"Kidney dialysis has long been identified as a service need for our local communities... Our residents will no longer have to travel long distances for dialysis services."



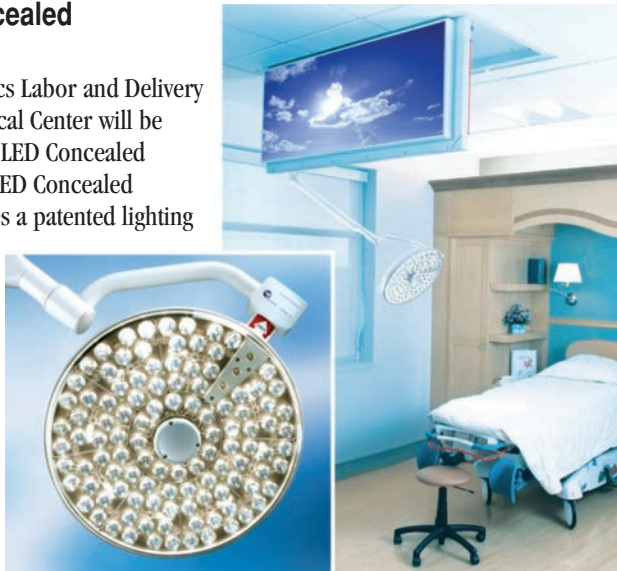
DR. BRYAN ROLPH



COMING SOON!

Maquet LED Concealed Lighting System

RC Hospital & Clinics Labor and Delivery Suites in the new Medical Center will be equipped with Maquet LED Concealed Lighting System. The LED Concealed Lighting System features a patented lighting technology that provides bright, shadow-free illumination for the optimized patient care. It also offers an aesthetically pleasing, back panel comfort light to help create a warm and nurturing environment in the hospital setting. These lights are flush with room ceiling to eliminate clutter, easy access in seconds to aide in patient care, and cool color temperature.



TOTGuard Infant Security System

To ensure a safe and secure environment RCH&C will be implementing TOTGuard infant security system using the latest in RFID technology. TotGuard actively monitors and instantly notifies staff of any alerts and alarms triggered by the TotGuard tags; it also integrates with video surveillance systems giving instant visibility of activity at alarm location.

OBIX® Perinatal Data System

Staying on the forefront of technology to provide optimal care for our patients, RC Hospital & Clinics is installing OBIX electronic fetal monitoring and patient data charting system. OBIX is developed using the latest technology, providing high levels of reliability, flexibility, and performance. OBIX data system will provide OB care providers the ability to get fast, accurate assistance in the assessment of fetal heart rate baseline, variability, accelerations, and decelerations.

Capital Campaign Update: Onsite MRI Coming Soon

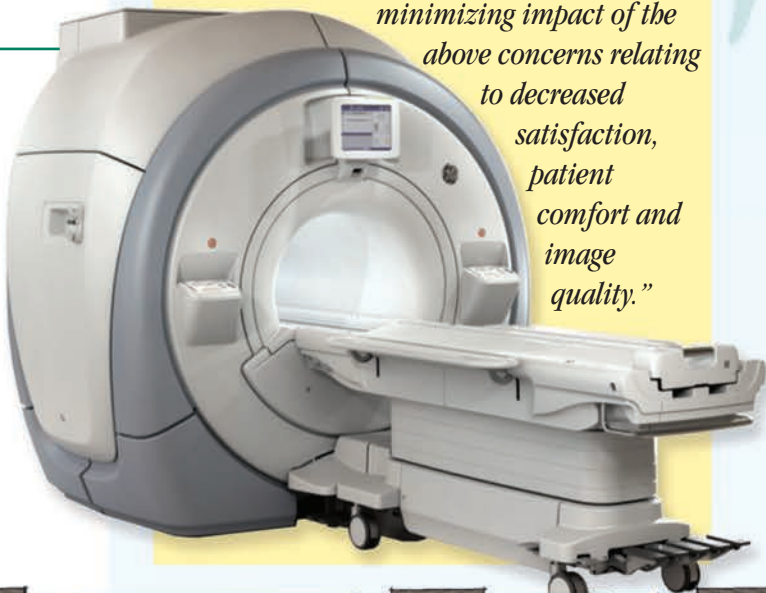
RC Hospital & Clinics Capital Campaign continues to offer our promise to add more additional unique services. Magnetic Resonance Imaging (MRI) has been available to our patients through a partnership with a mobile vendor for many years. The nature of mobile service however is such that it is only available for fragments of time per week.

The acquisition of a new MRI unit that will be installed in the new facility, lending the ability to offer that service daily. This will alleviate any constraints placed on our patients due to equipment access, lightening the burden of making an appointment within a narrow window of opportunity while the equipment is here. It will always be here.

One of the largest hurdles to overcome concerning MRI is the ability to keep our patients lying still for a period of time long enough to attain a quality imaging study. Claustrophobia is a major deterrent to such success, and the number one reason we do not complete an exam in the radiology department.

The MRI unit purchased is known as wide bore system, which in a nutshell, has a much larger opening than traditional scanners, minimizing impact of the above concerns relating to decreased satisfaction, patient comfort and image quality. With a state of the art MRI suite yielding a relaxing environment, coupled with the top of the line in MRI scanners, we are certain our patients will have a very favorable experience and a successful MRI scan here in Renville County.

“The MRI unit purchased is known as wide bore system, which in a nutshell, has a much larger opening than traditional scanners, minimizing impact of the above concerns relating to decreased satisfaction, patient comfort and image quality.”



“I want you all to know how much it meant to me to have Sally be brought here, cared for and be amongst people I know. Our whole family felt good about the care she received here. From the time she arrived in ER, to her death, she received great compassionate care from every one from x-ray to lab, dietary, housekeeping, nursing and hospice. I was glad to be a part of this great care team as our family handled the decline and loss of Sally. Our whole family was glad to be among people we know in the community we live in.”

Denise Pietig, LPN at RCH&C and family member of patient



Barrett's Esophagus Treatment Now At RCH

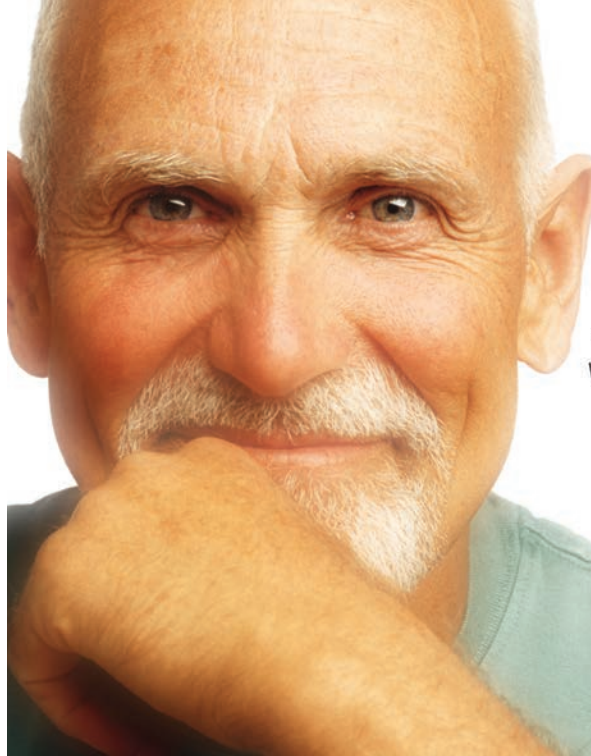
What is Barrett's Esophagus?

Barrett's Esophagus is a precancerous condition affecting the lining of the esophagus, the muscular tube that carries food, liquids and saliva from the mouth to the stomach. Normally, the esophagus is lined by a layer of short, squat cells, called squamous cells. This lining is similar to skin in that it is multilayered and protects the underlying esophagus from injury resulting from swallowed food and reflux of gastric contents. When chronic gastric reflux occurs and exposes the lining of the esophagus to acid, this lining can be injured and break down.

Barrett's Esophagus does not have any specific symptoms, however it is most often diagnosed in people who have long-term gastroesophageal reflux disease (GERD) — a chronic regurgitation of acid from the stomach into the lower esophagus. About 10% of people with chronic symptoms of GERD develop Barrett's esophagus.

How is Barrett's Esophagus diagnosed?

Dr. Jared Slater will be evaluating patients for Barrett's Esophagus who have severe or prolonged GERD symptoms. Even if a patient's heartburn or GERD symptoms disappear, the patient could still have Barrett's Esophagus or worse, the condition could have progressed to more advanced stages of the disease. To diagnose Barrett's, Dr. Slater performs an endoscopy, a procedure that allows inspection and tissue sampling of the esophagus.



Are You Living With Barrett's Esophagus?

Wouldn't You Rather Live Without it?

You and your family don't have to live with the anxiety and uncertainty of Barrett's esophagus.

We offer a minimally invasive treatment that can eliminate your Barrett's and help restore your peace of mind.

This procedure is performed without incisions as an endoscopic outpatient procedure.

If you have been diagnosed with Barrett's call Outreach Scheduling at **320.523.3445** for a consultation.

To learn if this procedure is right for you, call RC Hospital & Clinics today at **800.916.1836**.

For more information visit TreatBarretts.com

RCH&C COMING EVENTS

GOOD GRIEF PROGRAM

Led by Amy Boettger, MSW, LGSW, Monday evenings 5-7 p.m. March 2nd -April 6th. In the Willette Room at RC Hospital. To register contact Renville County Hospice at 320.523.3451.

PRENATAL EDUCATION

Topics include labor and delivery, pre-term labor, relaxation techniques, newborn care, postpartum care, breastfeeding, bottle feeding, and many other helpful tips. Classes are offered for free sessions are offered four times a year. To register contact Naomi Freyholtz OB Director at freyholtzn@rchospital.com or Dr. Joseph Montanaro OB-GYN at 800.916.1836.

2015 THOMPSON MEMORIAL GOLF CLASSIC

Wednesday, June 3rd at the Olivia Golf Course, sponsored by RC Hospital Foundation. To make a team contact Sara Maher at 320.523.3526.

FEBRUARY - American Heart Month

MARCH - Colorectal Cancer Awareness Month



611 East Fairview • Olivia, MN 56277
800.916.1836

Standard PreSort
**U.S. POSTAGE
PAID**
Olivia, MN
56277
Permit No. 8807

**Postal Patron
ECRWSS**